

Quick User Guide to Balancing with FP35 test box.
HEARING INSTRUMENT: Hearing aid
FM SYSTEM: Comfort Audio DT20 Ear level receiver(s)
and DM10 transmitter. (With DT20 Programmer).



STEP 1: Setting the test box level

Place coupler and microphone over the speaker in test chamber with lid open. Select F3. Please ensure the room is quiet.

Press LEVEL (F5) Press Start/ Stop and sound will be heard.



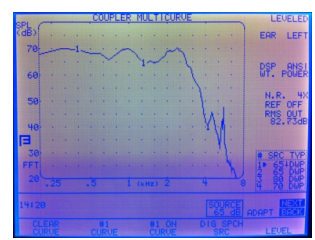
STEP 2: Attaching the hearing aid

Remove the ear mould from the hearing aid. Attach the hearing aid to the coupler and place in chamber. Ensure the hearing is ON and set to the M programme. Make sure that the hearing aid mic is positioned over the testbox speaker. **CLOSE THE LID**



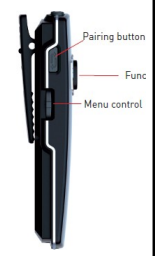
STEP 3: Producing HA reference level

Press MENU then using cursors DISPLAY and select the FFT SPL press exit. Using cursors adjust input to 65db. Check sound source is DIG SPCH (press and hold F4). Press start/stop press again to freeze curve.



STEP 4: Switching on the FM system

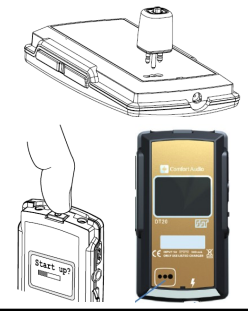
Switch on FM transmitter via the top button and ensure the transmitters front MUTE BUTTON is disabled. If it is activated simply access the MENU via the JOG wheel on the side of the transmitter. Push in JOG wheel, select MODE, select NONE and go BACK to main screen.



STEP 5: Check FM system is functioning

Plug the ear level in to the programmer.

Turn on the programmer via the top switch.



STEP 6: Check FM system is functioning

Plug in headphones in to the side socket increase volume via the + button until the green line is around a 3rd of the way up. Press the ear level button once. A single beep should be heard then speak in to transmitter to test.

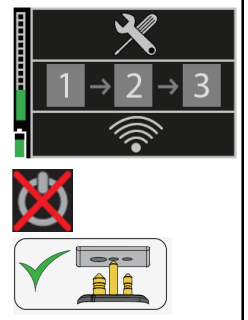


STEP 7: Setting up for hearing aid

Select the top setting on the Programmer (spanner and screw-driver) Via the Jog wheel.

Disable the ear level power button

Insert ear level in to hearing aid.



STEP 7: Placing the transmitter

Place microphone down in chamber on testbox speaker. Press F2 (curve 2) Check input is at 65db. **CLOSE THE LID**



STEP 9: Setting up FM neckloop receiver

Press **Start/ Stop** on the test box. If the level needs increasing insert ear level in to programmer and select the R level. Increase or decrease as necessary. Carry on until the second curve matches the first. Press **Start/Stop** to freeze second curve when it is closely matched.

