

Quick User Guide to Balancing with FP35 test box.
HEARING INSTRUMENT: Cochlear Implant
FM SYSTEM: Comfort Audio DT20 Ear level receiver(s)
and DM10 transmitter. (With DT20 Programmer).



STEP 1: Setting the test box level

Place coupler and microphone over the speaker in test chamber with lid open. Select F3. Please ensure the room is quiet.

Press LEVEL (F5) Press Start/ Stop and sound will be heard.



STEP 2: Attaching the Cochlear Implant

Connect microphone into coupler. Take off cone. Attach processor test lead to coupler (press and twist).

Leads required:

Freedom: DCTEST2
 Cochlear N5/6 : DCTEST3
 Medel/ Advanced Bonics: DCTEST4



STEP 3: Attaching the Cochlear Implant

Switch off processor, connect test lead in to the processor. Switch on processor again.



Place processor in chamber. With microphone over centre of test box speaker.



CLOSE THE LID IF POSSIBLE

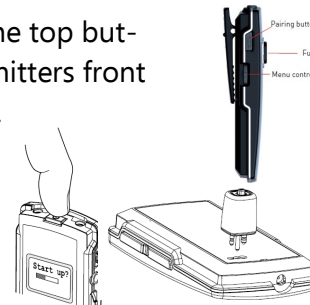
STEP 4: Producing Cochlear (reference level)

Press MENU then using cursors DISPLAY and select the FFT SPL press exit. Using cursors adjust input to 60db. Check sound source is DIG SPCH (press and hold F4). Press start/ stop press again to freeze curve.



STEP 5: Check FM system is functioning

Switch on FM system via the top buttons and ensure the transmitters front MUTE BUTTON is disabled. Plug the ear level in to the programmer. Turn on the programmer via the top switch.



STEP 6: Check FM system is functioning

Plug in headphones in to the side socket increase volume via the + button until the green line is around a 3rd of the way up. Press the ear level button once. A single beep should be heard then speak in to transmitter to test.



STEP 7: Setting up for hearing aid

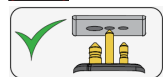
Select the top setting on the Programmer (spanner and screw-driver) Via the Jog wheel.



Disable the ear level power button



Insert ear level in to implant.



STEP 7: Placing the transmitter

Place microphone down in chamber on testbox speaker. Press F2 (curve 2) Check input is at 65db. **CLOSE THE LID**



STEP 9: Setting up FM neckloop receiver

Press **Start/ Stop** on the test box. If the level needs increasing insert ear level in to programmer and select the R level. Increase or decrease as necessary. Carry on until the second curve matches the first. Press **Start/ Stop** to freeze second curve when it is closely matched.

