

Roger touch and Mylink receiver

Prioryfield House, 20 Canon Street, Taunton, Somerset,
 TA1 1SW, 01823 323363 / 07941015282,
 info@robertsaudiosolutions.co.uk,
 www.robertsaudiosolutions.co.uk



Components

Roger Touch transmitter



Roger receiver



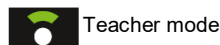
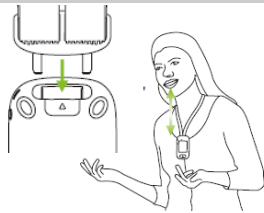
STEP 3: Pairing transmitter with receiver

Pair transmitter with the receiver, this should only have to be done once. Hold transmitter within a 15cm in range of the receiver and select CONNECT.



Using the transmitter

The transmitter can be used for a teacher or in a group situation (on table). This will operate automatically. For example when placed on a table the microphone will go into conference mode.



Teacher mode



Conference mode

STEP 1: Switch on microphone

Press and hold the on/off button until indicator light turns GREEN.



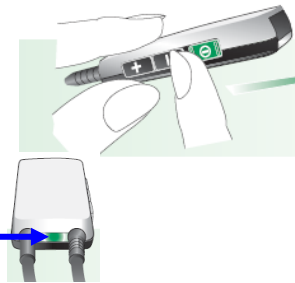
STEP 4: Increasing the volume

The volume of the neckloop can be altered via the + and - switch on the side of the receiver.



STEP 2: Fitting and switching on pupils receiver

Place the neckloop around hearing aid users neck and switch hearing aid to the 'T' position. Switch on the receiver via the slide switch on the side of the receiver, the indicator light will then illuminate.



STEP 5: Charging

Plug transmitter charger in to the mains using the plug provided and plug in to the base of the transmitter until the charging symbol appears. Plug receiver until the Green light flashes every 5 seconds.



Muting the microphone

To mute the system press the MUTE button located at the base of the transmitter. Red is muted and Green is un-muted.



Connected to audio source

To link and audio source to the transmitter use a 3.5mm audio jack lead. Plug in to headphone socket on device and then plug in to base of transmitter

